

Quality Solar Systems

SOLE
SOLAR SYSTEMS MANUFACTURER



SOLE S.A. is a pioneer in large centralized systems since 1974



Advantages

- Maximizes efficiency
- Rapid Heating
- Best aesthetic results
- Easy to install
- Compatible with all types of auxiliary heating
- Minimum maintenance needed
- Long durability

Commitment to the environment

Since its foundation in 1974 SOLE S.A. has been committed to the protection of the environment and the reduction of CO2 emission.

SOLE S.A. holds numerous prizes and environmental distinctions, contributing with its products to the environment in all 5 continents.

Solar Water Heating Systems

FCK
FORCED CIRCULATION KITS

FOR HOT WATER PRODUCTION BY SOLAR ENERGY

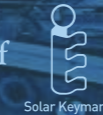
The new series of Forced Circulation Kits, have been designed in order to cope with the demands of any market all over the world, specializing in any application where hot water is demanded.

Durable
Withstanding 22,5 bar pressure!!!



SOLE S.A.

SOLAR SYSTEMS MANUFACTURER
Lefkton 1 & Laikon Agonon, 136 71 Acharnai - Athens - Greece
Tel.: +30210 2389500
Fax: +30210 2389502
Email: export@sole.gr
www.sole.gr
www.eurostar-solar.com



www.eurostar-solar.com

SOLAR SYSTEM AT BURJ KHALIFA

EcoCollector



The EUROSTAR ECO collector casing is made of specially designed extruded aluminum profile, without any external connections, screws, nuts or rivets. The high density rockwool insulation will maintain very high temperatures achieving an incredibly high efficiency.

The absorber is composed of Blue Selective Aluminum fins of 0.50mm thickness, welded to copper pipes with laser welding.

The thermal liquid achieves maximum transfer of heat to the water while protecting the system against scaling, rusting, freezing and overheating.

Eurostar Floor Standing Tank



The EUROSTAR Floor Standing tank is made of low carbon steel with a double "enamelling" coating (glass), oven treated at 860°C.

The FREON FREE high density polyurethane insulation maintains hot water for many days.

The magnesium anode effectively protects the cylinder from electrolysis. The backup electric heater ensures hot water even in very cloudy days.

SOLE's Solar Systems are manufactured in compliance with the International Standards for Quality Assurance ISO 9001:2015.

The collector's performance and reliability is tested according to EN 12975-2 and has been granted with the Solar Keymark Certificate and TÜV Certificate for max pressure of 22,5 bar.

SYSTEM SPECIFICATIONS

SOLAR COLLECTORS							
TYPE	S100	S125	S150	S200	S230	S260	
AREA OF COLLECTOR m ²	0.99	1.23	1.48	1.88	2.28	2.64	
DIMENSIONS mm	1026x960x81	1280x960x81	1540x960x81	1960x960x81	1960x1165x81	2135x1238x81	
WEIGHT kg	20,00	22,00	24,00	29,50	35,50	40,00	
FRAME	Aluminum profile. Free of screws and rivets.						
COVER	Tempered low iron prismatic glass 3.2 mm. 90,5% transmission.						
SEALING	Acrylic foam - Structural Silicon						
INSULATION	Rockwool 40mm (50kg/m ³) back and Glass wool 20 mm (30kg/m ³) sides						
ABSORBER MATERIAL	Blue Selective Aluminum fins 0.50mm thickness, welded to copper pipes with laser welding.						
ABSORPTION (α)	95% (± 0.02)						
EMISSIVITY (ε)	5% (± 0.02)						
EFFICIENCY (η ₀)	0.763						
MAX. TEST PRESSURE	2250kPa (22.5 bar)						
MAX. WORKING PRESSURE	1500kPa (15 bar)						
STAGNATION TEMPERATURE	164°C						

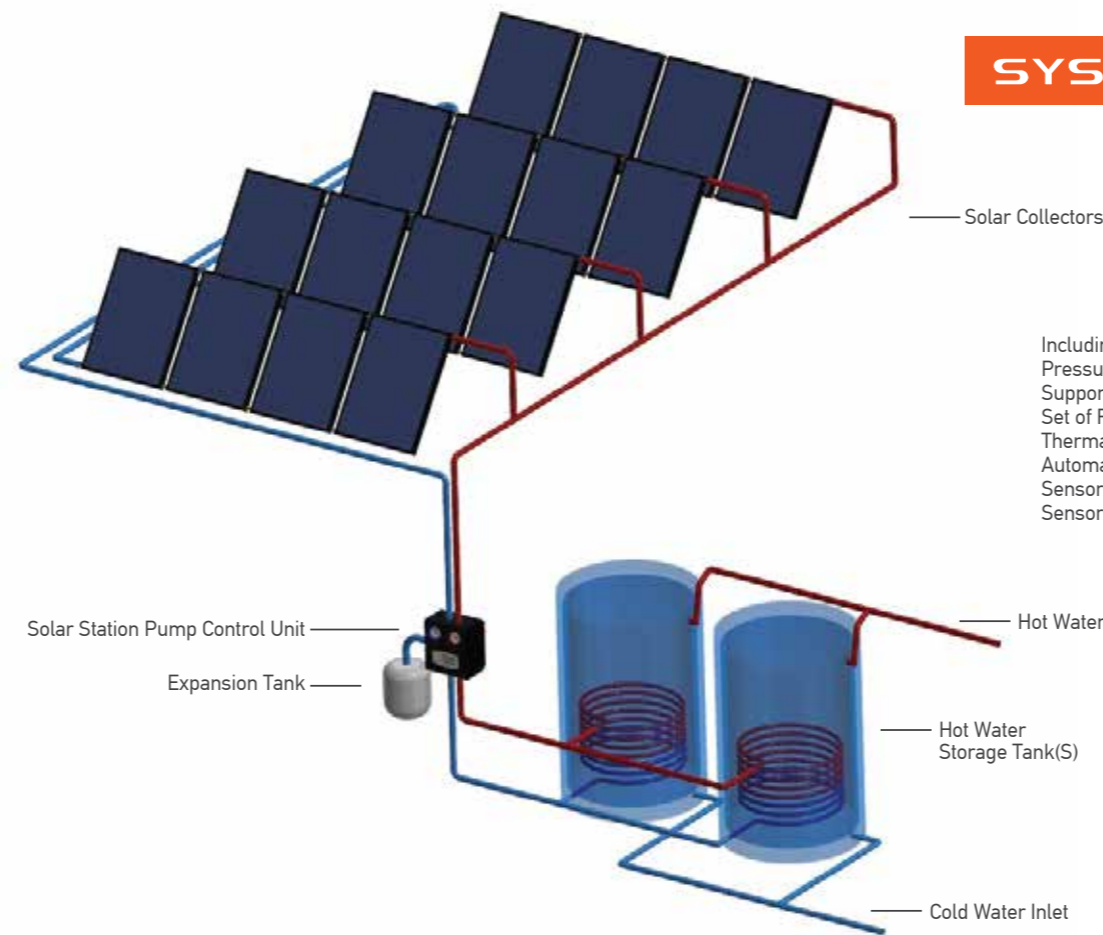
FLOOR STANDING TANKS BL1 / BL2 / CBL1 / CBL2													
TYPE BL1/BL2/CBL1/CBL2	160	200	300	400	500	800	1000	1500	2000	2500	3000	4000	5000
NOMINAL CAPACITY (lt)	160	200	300	400	500	800	1000	1500	2000	2500	3000	4000	5000
WEIGHT EMPTY (kg) BL1	54	65	92	137	145	215	233	325	442	-	552	576	699
WEIGHT EMPTY (kg) BL2	66	70	100	146	158	220	279	365	486	-	567	593	720
BOILER BODY	The boiler "body" is made from steel plate S235JR. The boiler is (glass) enamelled with the advanced double "direct" method "fired" at 860°C for tanks up to 2000ltr and epoxy resins for tanks larger than 2000ltr												
HEAT EXCHANGER	Internal heat exchanger made from Enamelled Steel or copper (depending on the size). Stainless steel heat exchanger also available.												
INSULATION	Freon free Polyurethane 50-100mm (40kg/m ³) casted under pressure or flexible (tanks larger than 500ltr).												
EXTERNAL COVER	Coloured PVC flexible jacket with zipper.												
ANODE PROTECTION	Magnesium rod.												
MAX. WORKING PRESSURE	6-10 bar upon request.												

BL1= Storage tank with 1 heat exchanger
BL2 = Storage tank with 2 heat exchangers
Optional electric element 2-24kW

CBL1 = Storage tanks with 1 removable heat exchanger
CBL2 = Storage tanks with 2 removable heat exchangers

DATA, DESCRIPTIONS, TECHNICAL CHARACTERISTICS AND ACCESSORIES ARE ONLY INDICATIVE. NOT BINDING AND CAN BE SUBJECTED TO VARIATIONS

SYSTEM COMPONENTS



Including:
Pressure Regulator
Support Frames
Set of Fittings and Accessories
Thermal Liquid
Automatic Air Vents
Sensor Pockets
Sensors



FORCED CIRCULATION KITS

MODEL	STORAGE TANK	COLLECTOR	PRESSURE REGULATOR	SOLAR STATION (PUMP CONTROL UNIT)	EXPANSION TANK	SUPPORT FRAME	SET OF FITTING ACCESSORIES	THERMAL LIQUID
FCK 200	FCK 200	2 x ECO S260	1	1	1	1	1	2
FCK 300	FCK 300	3 x ECO S260	1	1	1	2	1	2
FCK 500	FCK 500	4 x ECO S260	1	1	1	2	1	3
FCK 800	FCK 800	5 x ECO S260	1	1	1	3	1	4
FCK 1000	FCK 1000	6 x ECO S260	1	1	1	3	1	4

Systems with tanks including two heat exchangers are available. Larger projects are designed upon request.

